

2-Storey House | 3 Bedrooms

Typical Floorplan - 2055 ft²



Ground Floor - 1155 ft²



Lower Ground Floor - 900 ft²



2-Storey House | 4 Bedrooms

Typical Floorplan - 2190 ft²



Ground Floor - 1155 ft²

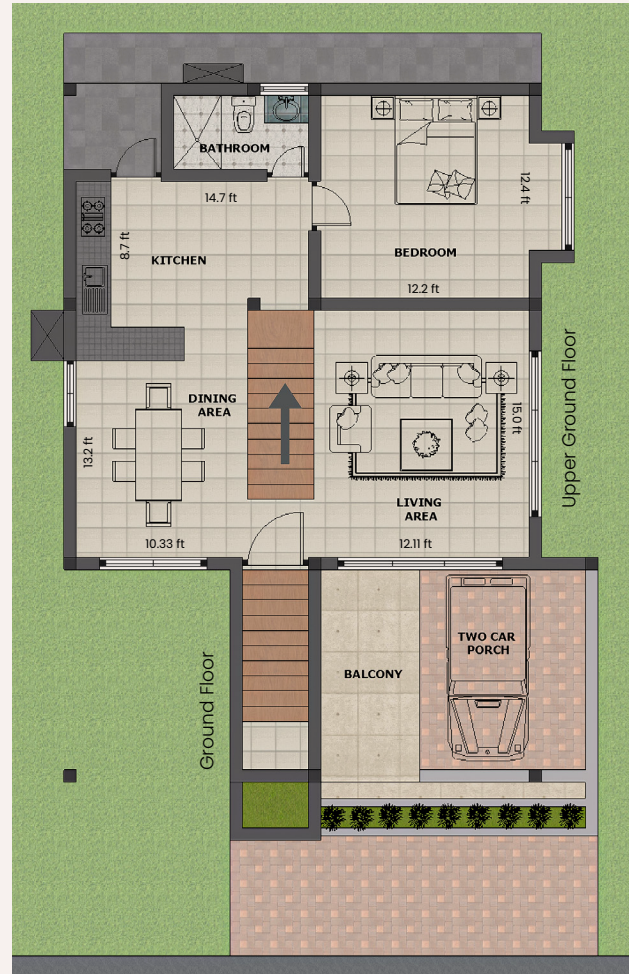


Lower Ground Floor - 1035 ft²



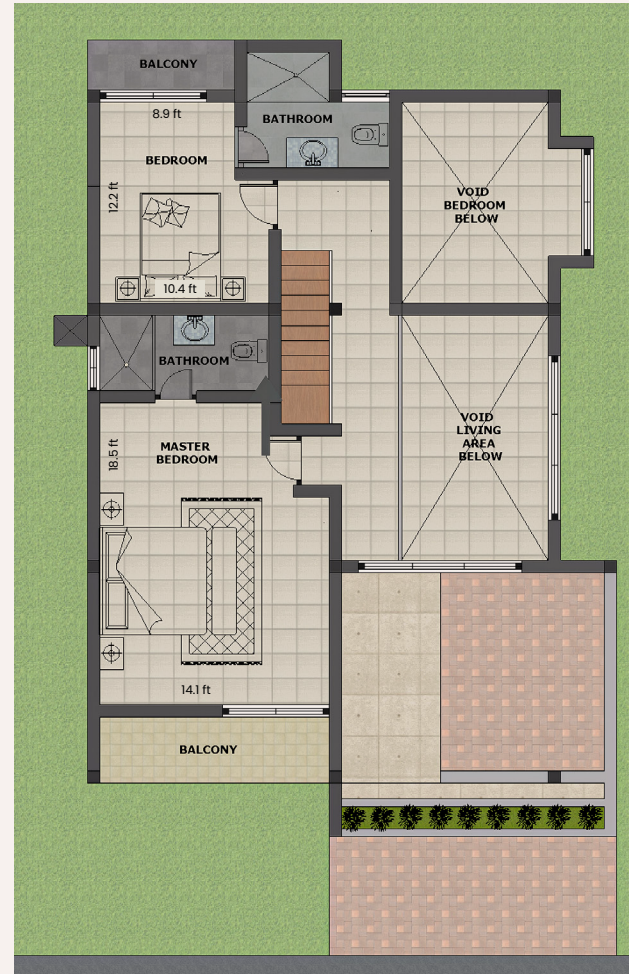
3-Storey House | 3 Bedrooms

Typical Floorplan - 2055 ft²



Ground Floor - 375 ft²

Upper Ground Floor - 956 ft²

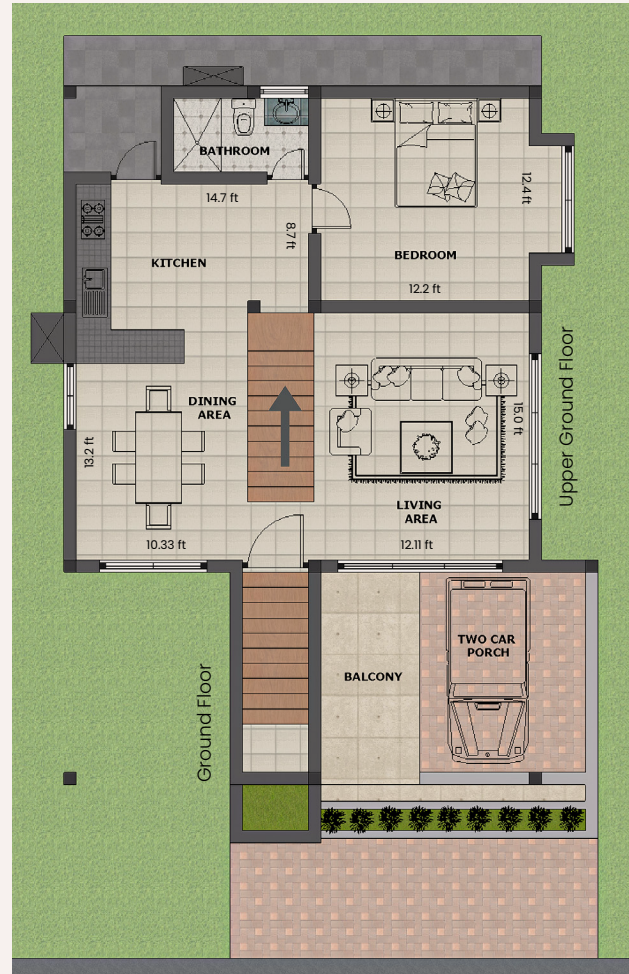


First Floor - 724 ft²



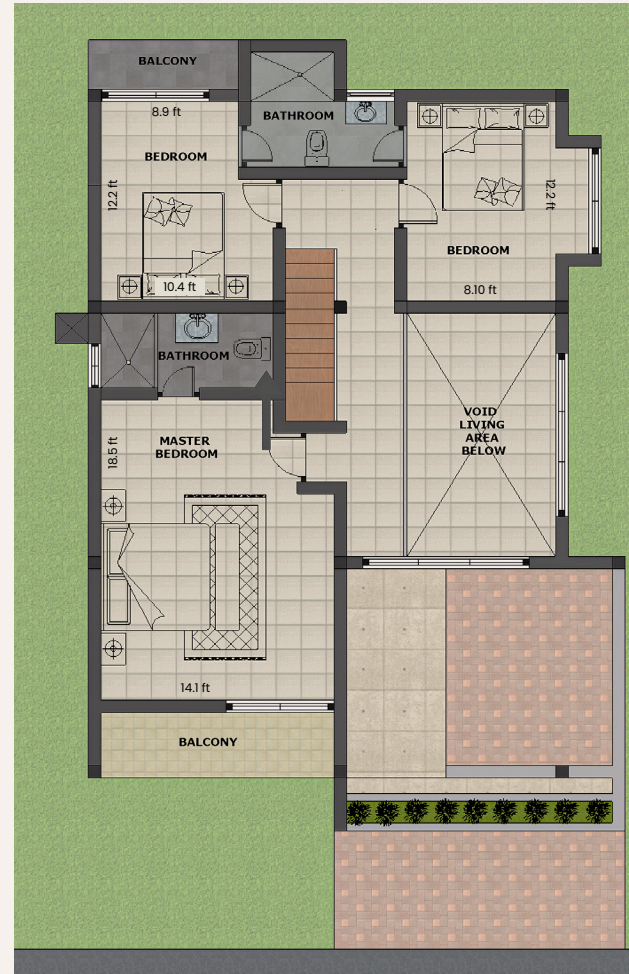
3-Storey House | 4 Bedrooms

Typical Floorplan - 2190 ft²



Ground Floor - 375 ft²

Upper Ground Floor - 956 ft²



First Floor - 859 ft²

