



HANTHANA
H I L L S E S T A T E

WWW.JATLIVING.COM



Hanthana Hills Estate is a public-private partnership between The National Housing Development Authority and Millennium Distributors & Traders (PVT) Ltd, a sister company of JAT Property Group (PVT) Ltd.

The houses are individually designed by architect Bernard Gomez.

WWW.JATLIVING.COM | 0117 200 800

Contents

Embrace the Charm of Living in Nature	5
A Thoughtful Location	6
Spacious Interiors	10
Character & Ambiance	12
Lush Paradise	13
Estate Plan	14
Unique Layout Designs	15
2-Storey House 3 Bedrooms	16
2-Storey House 3 Bedrooms	18
3-Storey House 3 Bedrooms	20
3-Storey House 4 Bedrooms	22
Investment Opportunity	24





Embrace the Charm of Living in Nature

Welcome to the captivating world of Hanthana Hills Estate. Nestled on the picturesque slopes of Hanthana and overlooking the historical city of Kandy, this new housing development project offers an unparalleled living experience, where exquisite design meets breathtaking scenery.

Our enchanting estate boasts **102 thoughtfully designed homes**, each offering a haven of comfort and elegance. Immerse yourself in the spacious interiors, embrace the harmony of nature, and indulge in the serene ambiance that these homes have to offer.

102 Elegant Homes

Our curated collection offers a choice between 2 and 3-story houses with 3 and 4 Bedroom layout options.

Starting at LKR 48 Million

An exceptional value beyond comparison, offering affordable luxury tailored to your preferences.

Prioritizing Inclusivity

Our designs prioritize accessibility, ensuring convenience for all residents, including those with disabilities.

Customization & Upgrades

Elevate your living experience by customizing your dream home with a diverse range of upgrade options.

Spaciously Designed

Each villa boasts a substantial buildable area ranging from 2,055 to 2,191 sq.ft, providing an optimized living space.



Surrounding Areas

Kandy Town - 3 km

Railway Station - 3 km

Ampitiya - 8.5 km

Pilimathala - 16 km

Peradeniya - 9 km

Katugastota - 9.8 km

Highway Entrance - 44 km

Health Care

Kandy National Hospital - 1.5 km

Durdans Medical Centre - 3.4 km

Asiri Hospital Kandy - 5.1 km

Recreation

Kandy City Center - 3.7 km

Bogambara Cultural Center - 4 km

Municipal Indoor Sports - 3.2 km

Royal Botanic Gardens - 8.5 km

Digana Golf Club - 25.9 km

Education

Hillwood College - 2.5 km

Good Shepherd Convent - 3.7 km

American Col. of Higher Ed. - 3.9 km

Trinity College - 4.2 km

Mahamaya College - 4.4 km

Dharmaraja College - 6.5 km

University of Peradeniya - 8.7 km

Convenience Stores

Cargills Food City - 3.7 km

Keells Super - 4.4 km

Arpico Super Centre - 5 km

Leisure

Queen's Hotel - 4.6km

Radisson Hotel - 4.1 km

Suisse Hotel - 4.1 km

Earl's Regent - 6 km

Thilanka Hotel - 6.1 km



Spacious Interiors

Our vision of creating spacious and airy interiors comes to life in each of these individually designed houses. Step inside, and you'll be greeted by generous living spaces that seamlessly blend functionality with elegance.

High ceilings and ample natural light create an open and inviting atmosphere, inviting you to relax and unwind. The well-thought-out floor plans offer versatility, allowing you to customize your living spaces to suit your unique lifestyle.





Character & Ambiance

You'll find that every detail has been meticulously curated to create an atmosphere of bliss. Combining modern elements with a touch of rustic charm, the interior of these homes exudes a unique and timeless design. Rich textures, earthy tones, and thoughtfully chosen materials harmonize with the surrounding landscape, infusing the living spaces with a sense of warmth and harmony.

Explore a world of possibilities with a **range of upgrades available**, from the kitchen and flooring to sanitary fittings and landscaping. For more information, don't hesitate to reach out to our knowledgeable Sales Agents.





Kandy city view from lot 75

Lush Paradise

As you step outside, you'll find yourself embraced by expansive greenery that beckons you to explore and connect with nature. The seamless integration of the interior and garden spaces blurs the boundaries between indoors and outdoors, inviting you to enjoy the serenity of nature from every corner of your home.

Whether your wish is to entertain guests outdoors or simply bask in the tranquility of your private oasis, the garden is easily accessible, offering a perfect extension to your living space.

Estate Plan

Embracing the diverse landscapes of the estate, each house boasts a distinct design, making every dwelling a unique space. Whether perched on a gentle slope, surrounded by lush greenery, or overlooking the breathtaking cityscape of Kandy, residents have the privilege of choosing from a variety of captivating views that match their personal preferences and desires.



Unique Layout Designs

Embracing the diverse landscapes of the estate, each house boasts a distinct design, making every dwelling a unique space. Whether perched on a gentle slope, surrounded by lush greenery, or overlooking the breathtaking cityscape of Kandy, residents have the privilege of choosing from a variety of captivating views that match their personal preferences and desires.

Hanthana Hills Estate offers a range of 2 and 3-storey houses, each with 3 and 4-bedroom layout options. These villas are generously designed with a substantial buildable area, spanning from 2,055 to 2,191 sqft, meticulously planned to maximize living space. Moreover, our commitment to inclusivity shines through in our designs, as we prioritize accessibility, guaranteeing convenience and comfort for all residents, including those with disabilities.

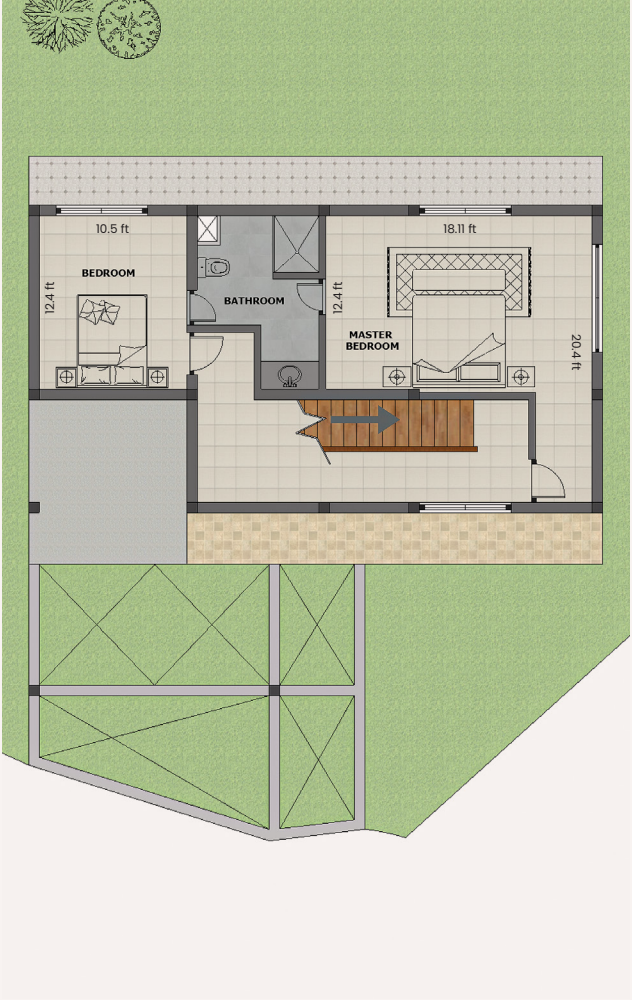


2-Storey House | 3 Bedrooms

Typical Floorplan - 2055 ft²



Ground Floor - 1155 ft²



Lower Ground Floor - 900 ft²

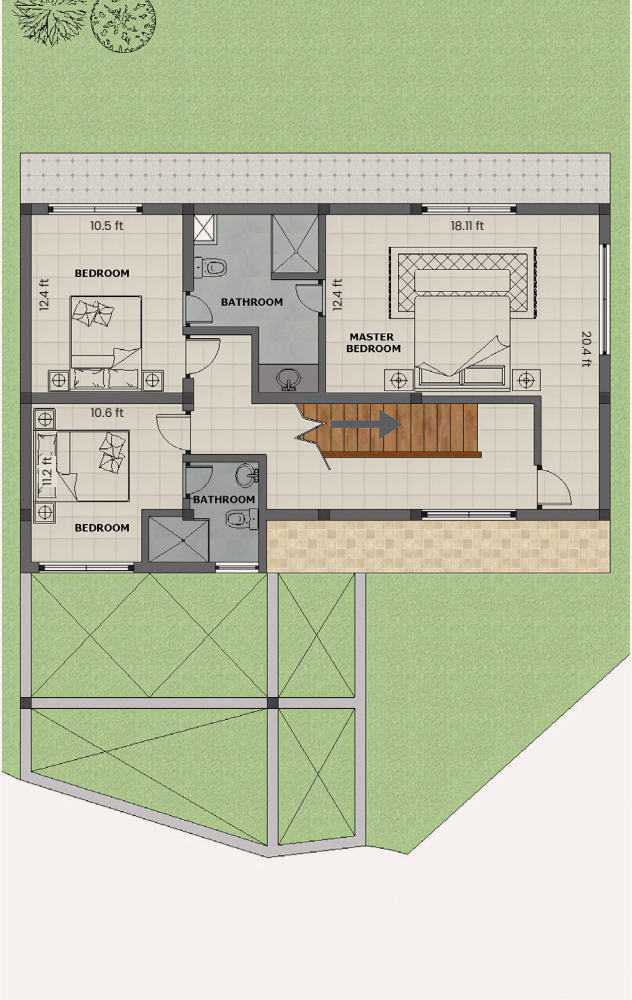


2-Storey House | 4 Bedrooms

Typical Floorplan - 2190 ft²



Ground Floor - 1155 ft²

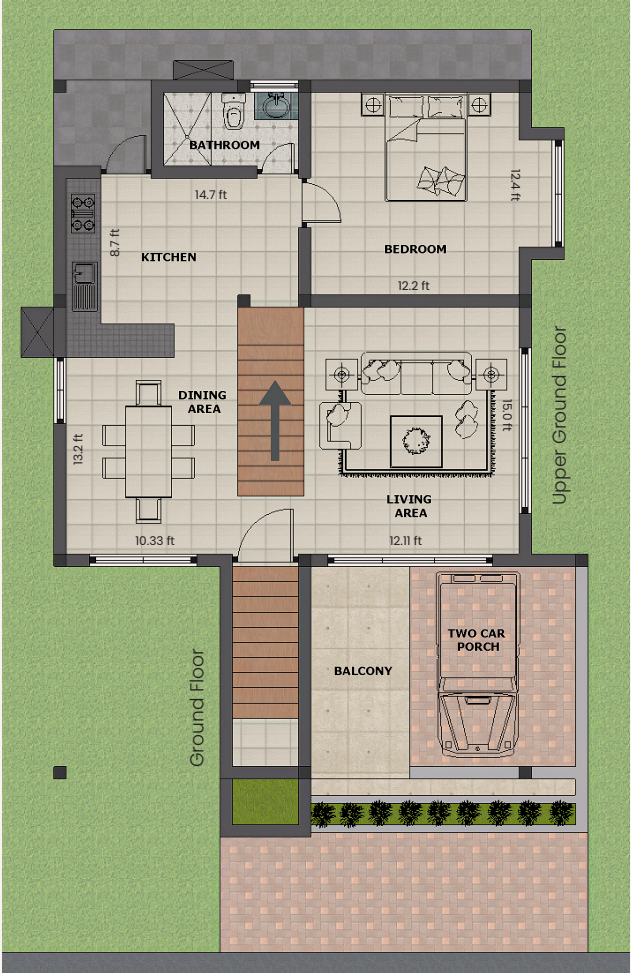


Lower Ground Floor - 1035 ft²

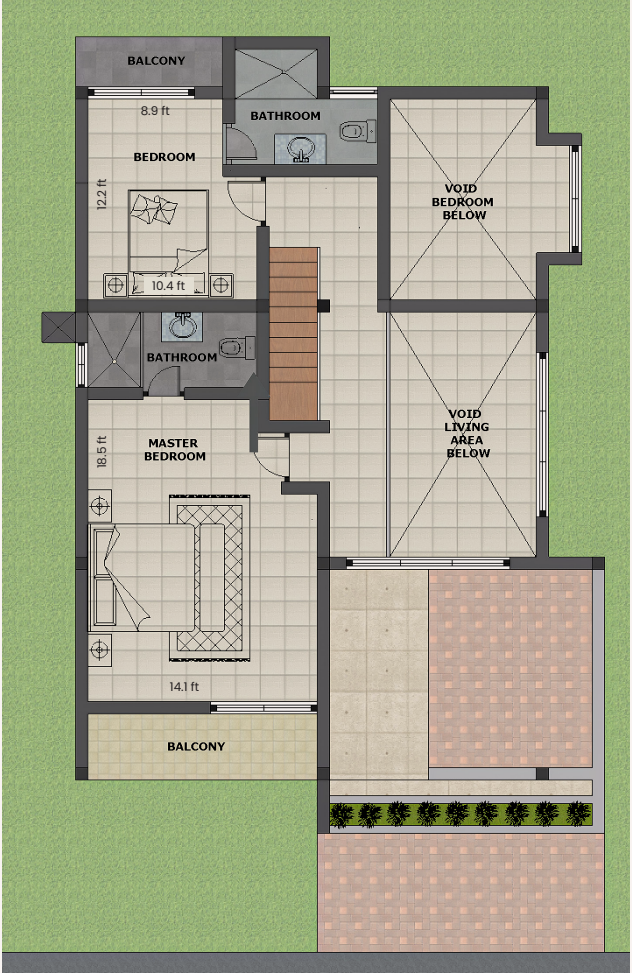


3-Storey House | 3 Bedrooms

Typical Floorplan - 2055 ft²



Ground Floor - 375 ft²
Upper Ground Floor - 956 ft²

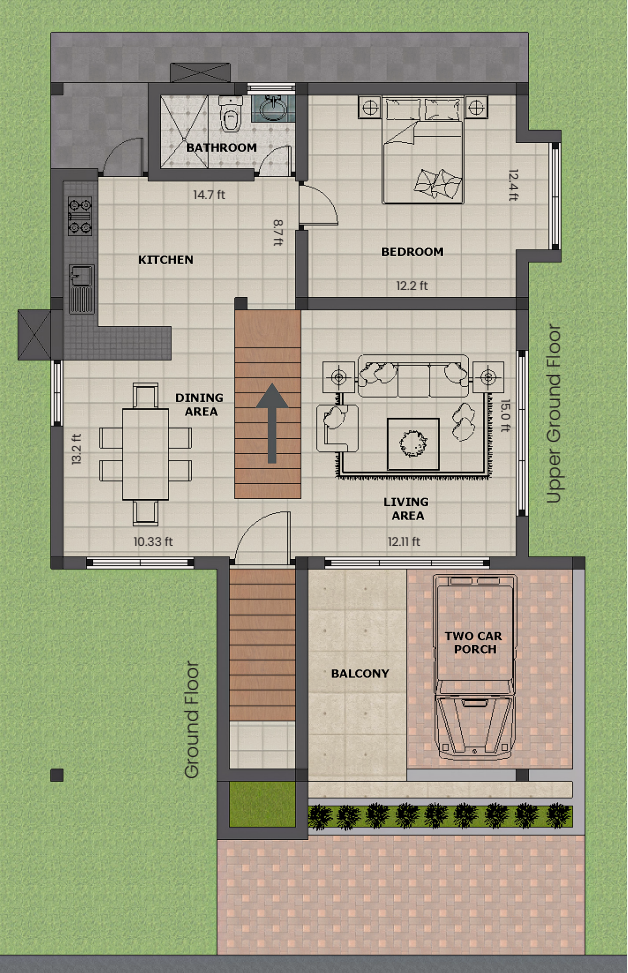


First Floor - 724 ft²



3-Storey House | 4 Bedrooms

Typical Floorplan - 2190 ft²



Ground Floor - 375 ft²
Upper Ground Floor - 956 ft²



First Floor - 859 ft²



Investment Opportunity

We invite you to embark on your journey towards owning a piece of Hanthana Hills Estate's enchanting landscape.

Starting at just **LKR 48 Million**, the homes at Hanthana Hills Estate provide a remarkable blend of affordable luxury tailored to your preferences.

This extraordinary opportunity stands as a unique find, offering **unmatched value in today's real estate landscape**.

Beyond its allure as a captivating residential haven, Hanthana Hills Estate also presents an exceptional investment opportunity. With its prime location and picturesque surroundings, owning a home in this esteemed estate can be a wise and rewarding decision.

The soaring popularity of the city of Kandy as a tourist destination makes Hanthana Hills Estate an ideal place for those seeking an investment property.

Consider the potential of renting out your property on platforms like Airbnb to capitalize on the city's constant influx of visitors. The enchanting views, tranquil ambiance, and proximity to cultural attractions make it an enticing prospect for vacationers and explorers alike.



WWW.JATLIVING.COM | +94 117 200 800



HANTHANA

H I L L S E S T A T E

Reasonable care has been taken in the preparation of all marketing materials, but the Developer and/ or its Agents do not warrant the accuracy of the marketing materials and shall not be held responsible for any inaccuracies therein.

The statements, information, and depictions in the marketing material are believed to be correct but shall not be relied upon as statements of representation of facts, and they are not intended to form any part of the contract of the sale of the housing units. In particular, visual representations such as pictures and drawings are artist impressions only and are not representations of fact. All information contained in the marketing materials, including plans and specifications, is current at the time of printing and is subject to such changes as required or approved by the Developer or relevant authorities. The floor areas stated in the brochure are approximate measurements and are subject to a final survey. The Sale and Purchase Agreement shall form the entire agreement between the Developer and Purchaser and shall in no way be modified by any statements or representations whether contained in the marketing materials or given by the Developer and/or its Agent(s) or otherwise.