



ASTERRA
RESIDENCIES



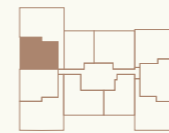
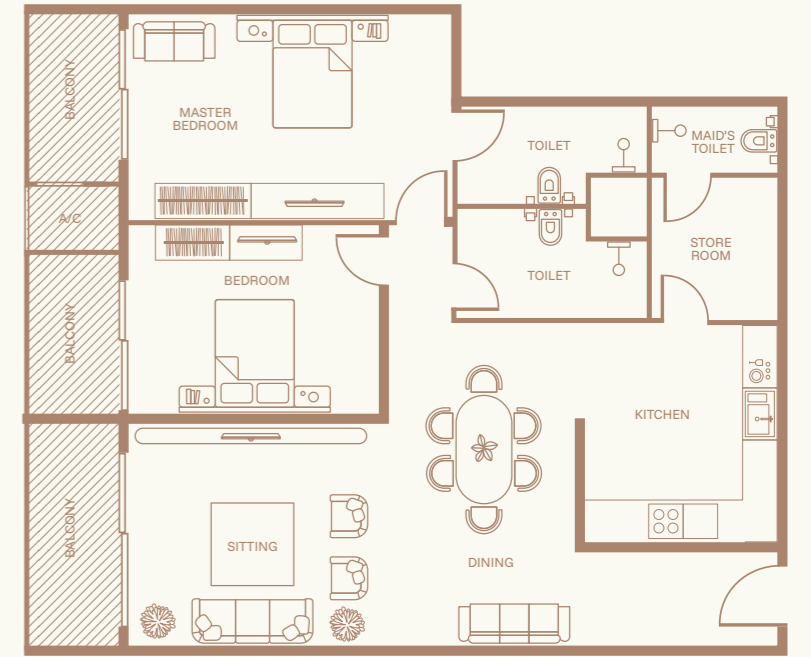
THALAWATHUGODA



APARTMENT LAYOUTS

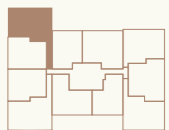
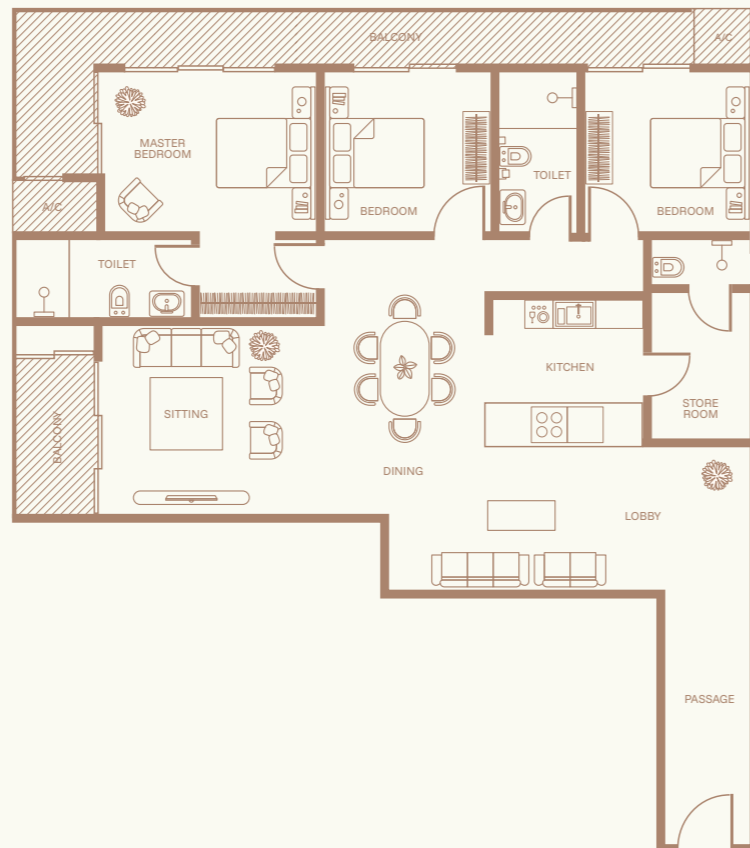
APARTMENT TYPE B

Total Area	1,247sqft
Bedrooms	2
Bathrooms	2



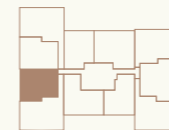
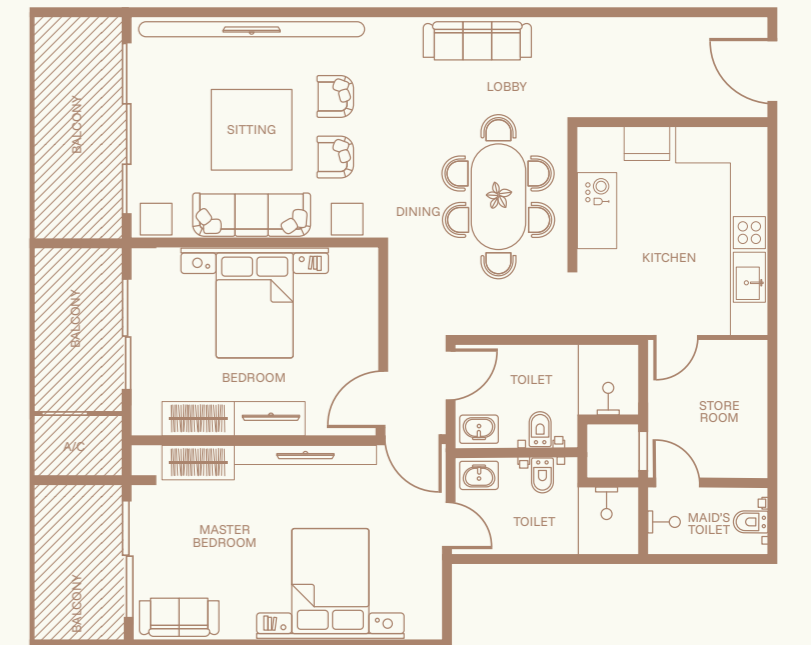
APARTMENT TYPE A

Total Area	1,574sqft
Bedrooms	2
Bathrooms	2



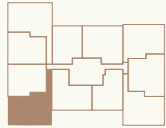
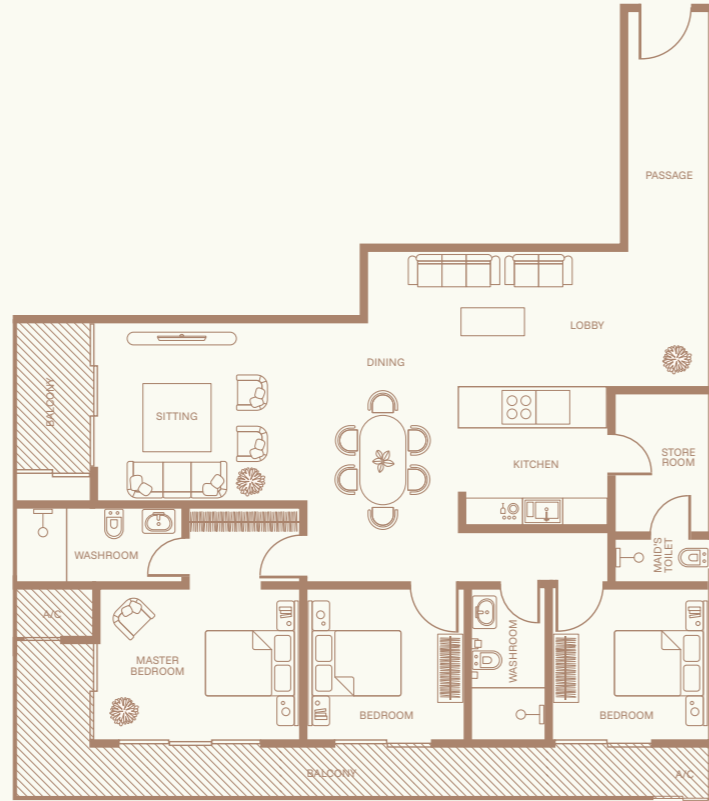
APARTMENT TYPE C

Total Area	1,247sqft
Bedrooms	2
Bathrooms	2



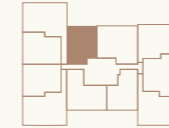
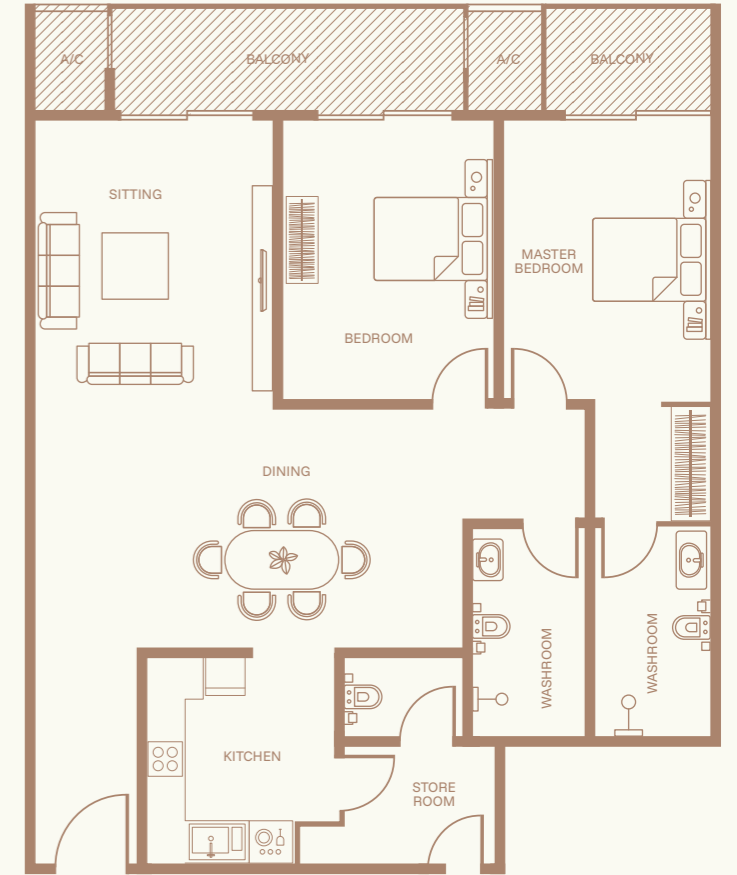
APARTMENT TYPE D

Total Area	1,575sqft
Bedrooms	3
Bathrooms	2



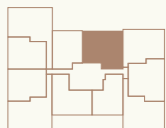
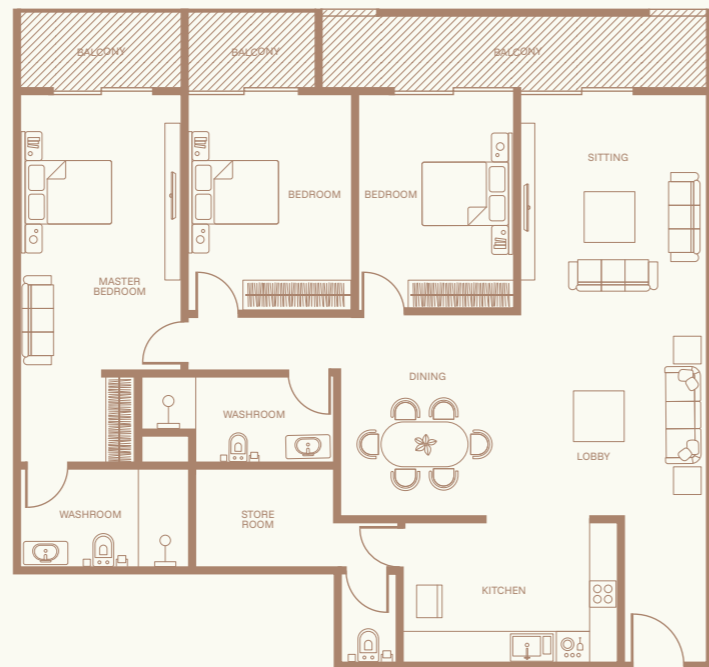
APARTMENT TYPE F

Total Area	1,229sqft
Bedrooms	2
Bathrooms	2



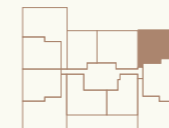
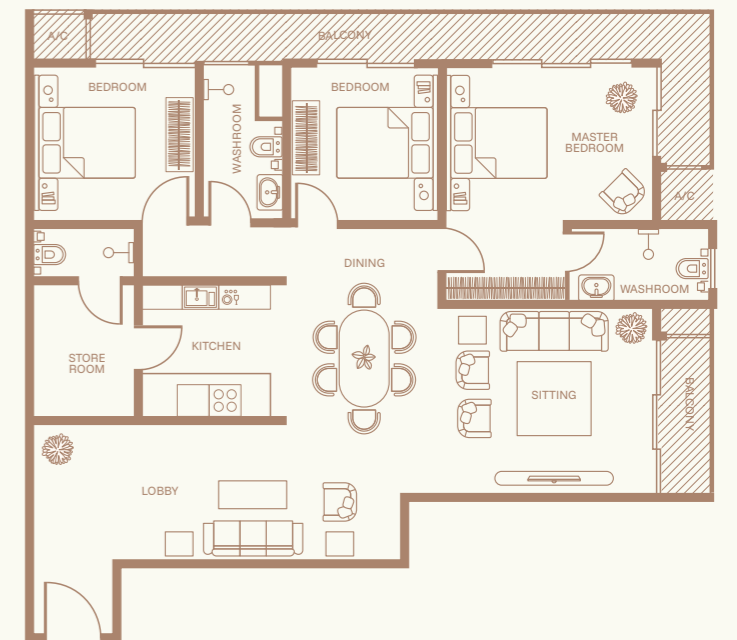
APARTMENT TYPE E

Total Area	1,586sqft
Bedrooms	3
Bathrooms	2



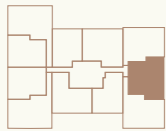
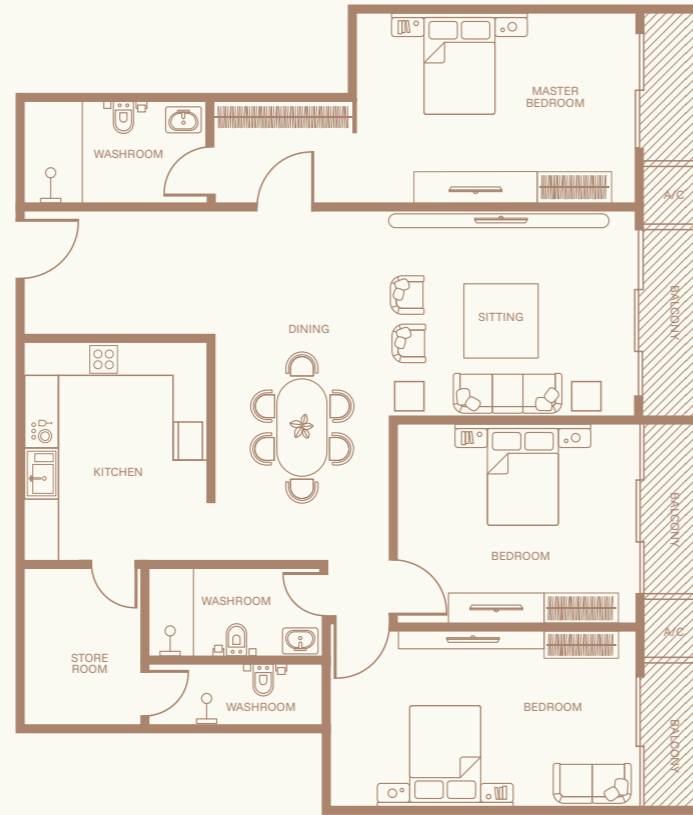
APARTMENT TYPE G

Total Area	1,461sqft
Bedrooms	3
Bathrooms	2



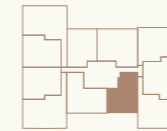
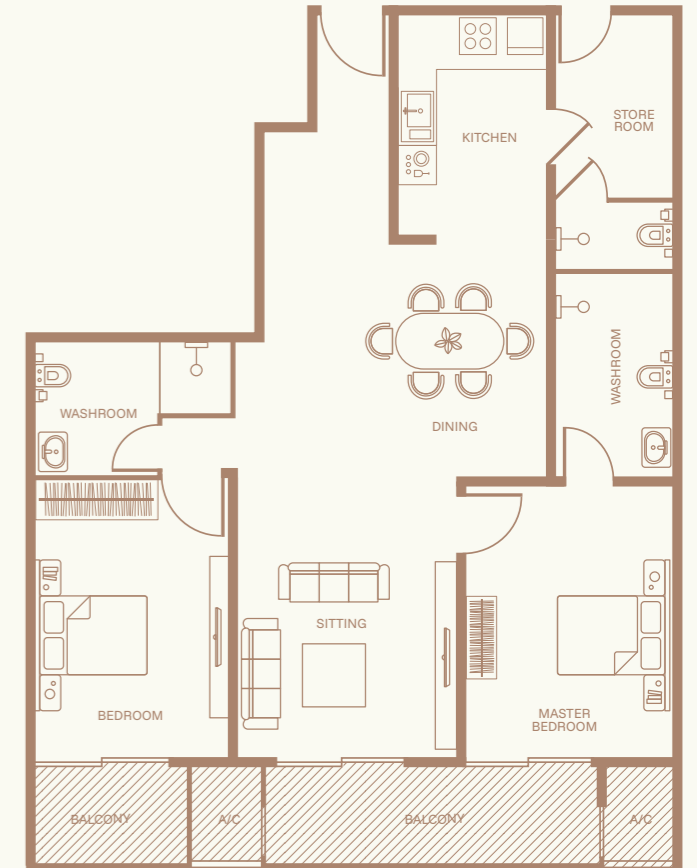
APARTMENT TYPE H

Total Area	1,508sqft
Bedrooms	3
Bathrooms	2



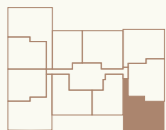
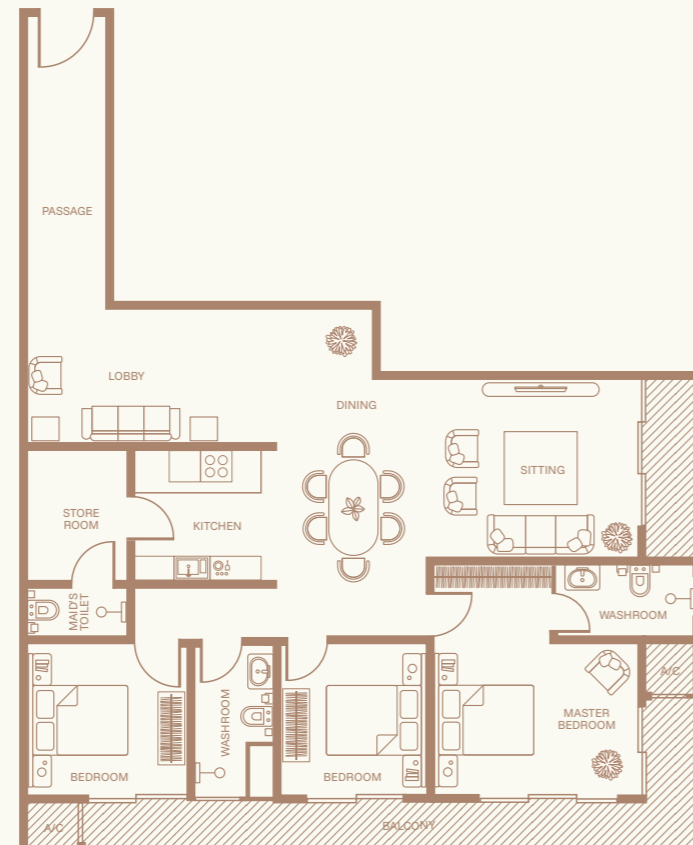
APARTMENT TYPE J

Total Area	1,185sqft
Bedrooms	2
Bathrooms	2



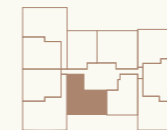
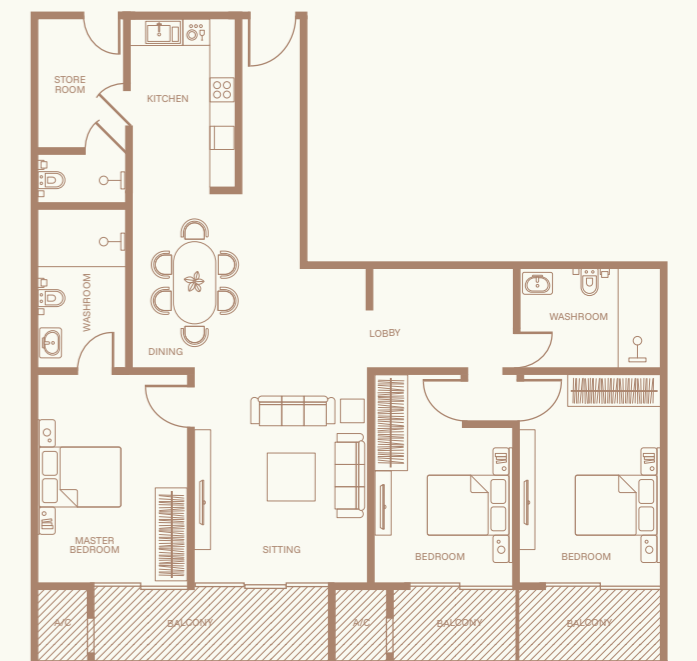
APARTMENT TYPE I

Total Area	1,528sqft
Bedrooms	3
Bathrooms	2

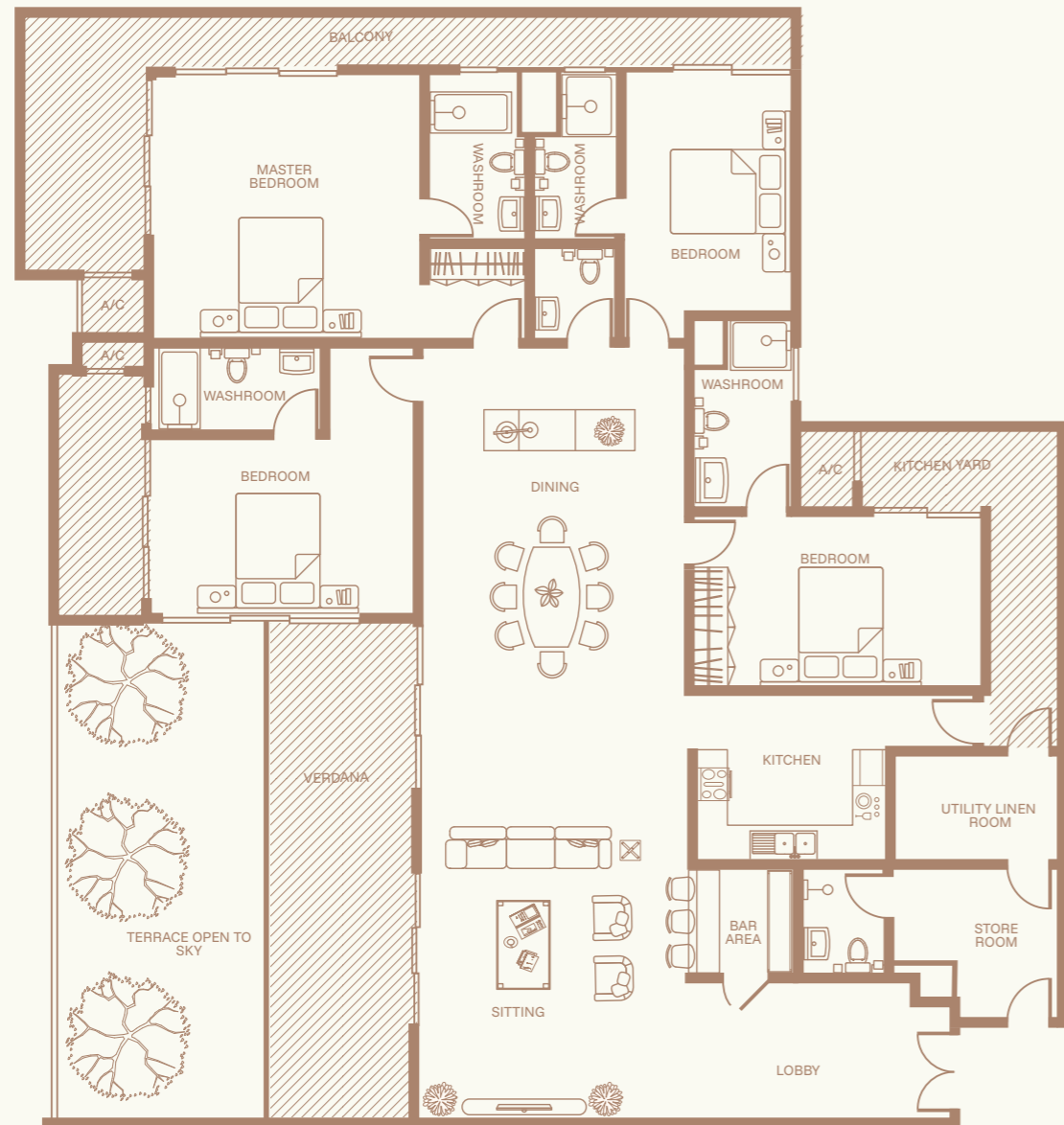


APARTMENT TYPE K

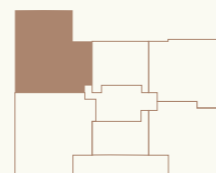
Total Area	1,408sqft
Bedrooms	3
Bathrooms	2



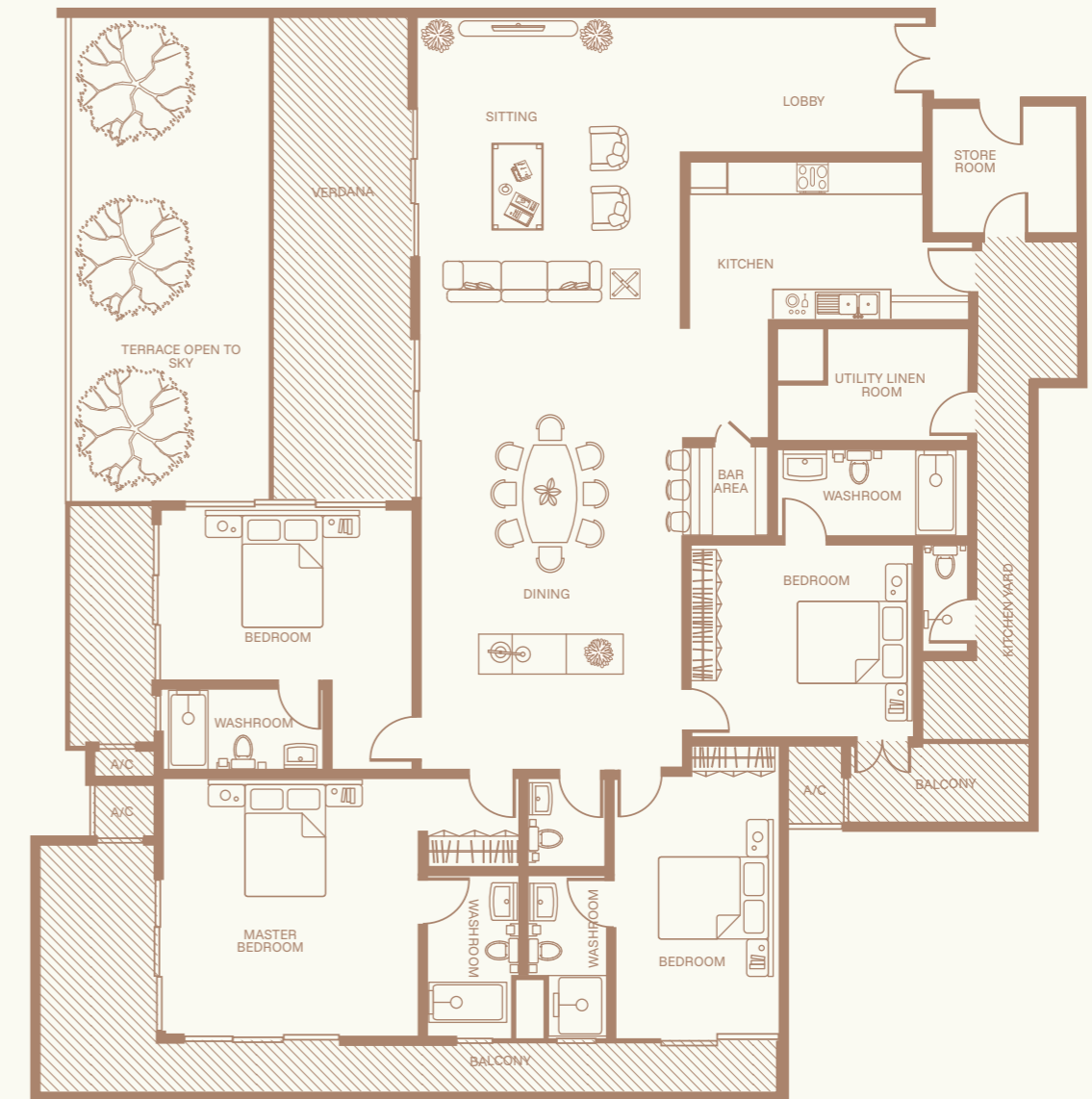
AETHERA PENTHOUSE



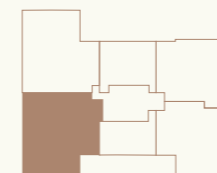
Total Area	3,480 sqft
Bedrooms	4
Bathrooms	4



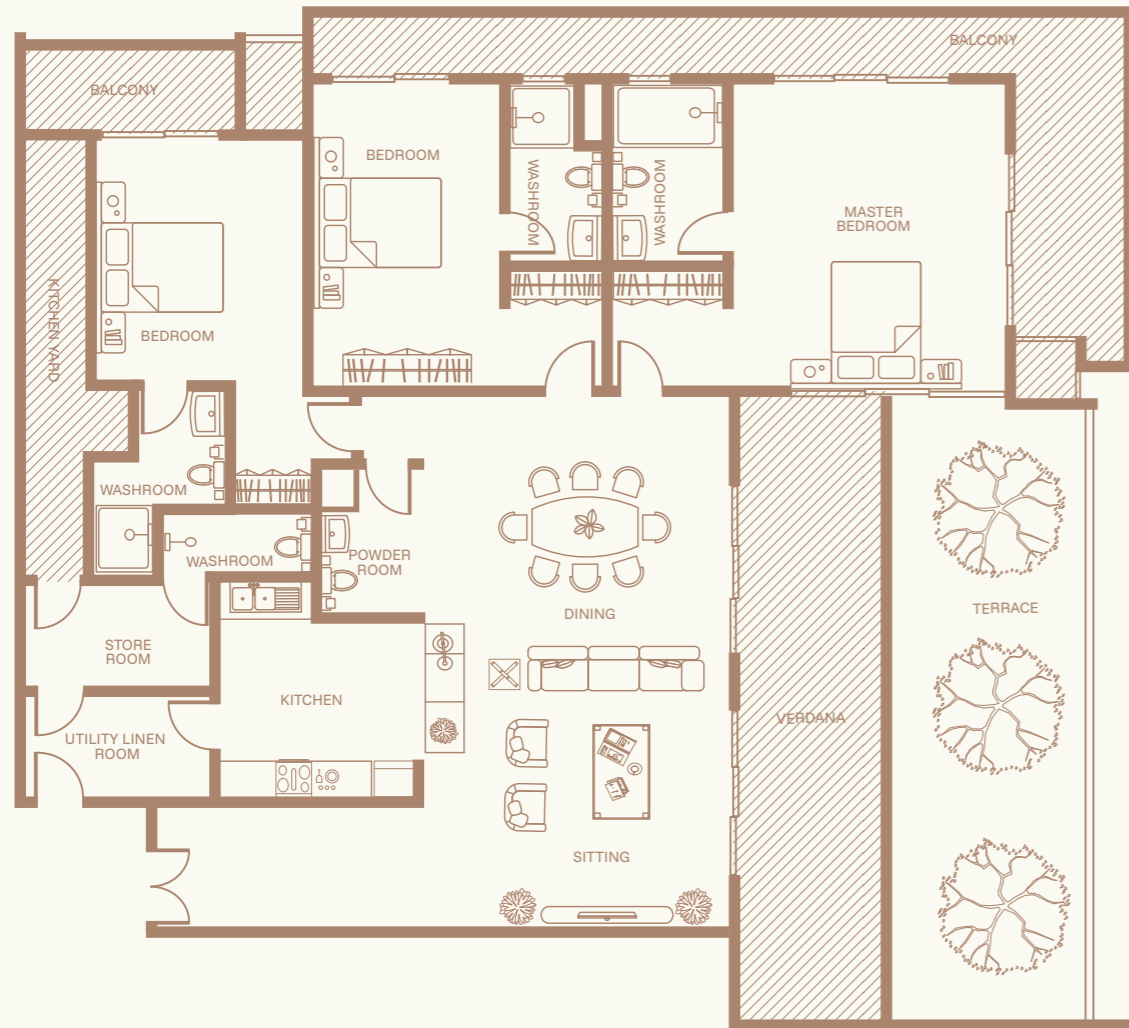
AVERON PENTHOUSE



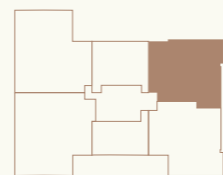
Total Area	3,642 sqft
Bedrooms	4
Bathrooms	4



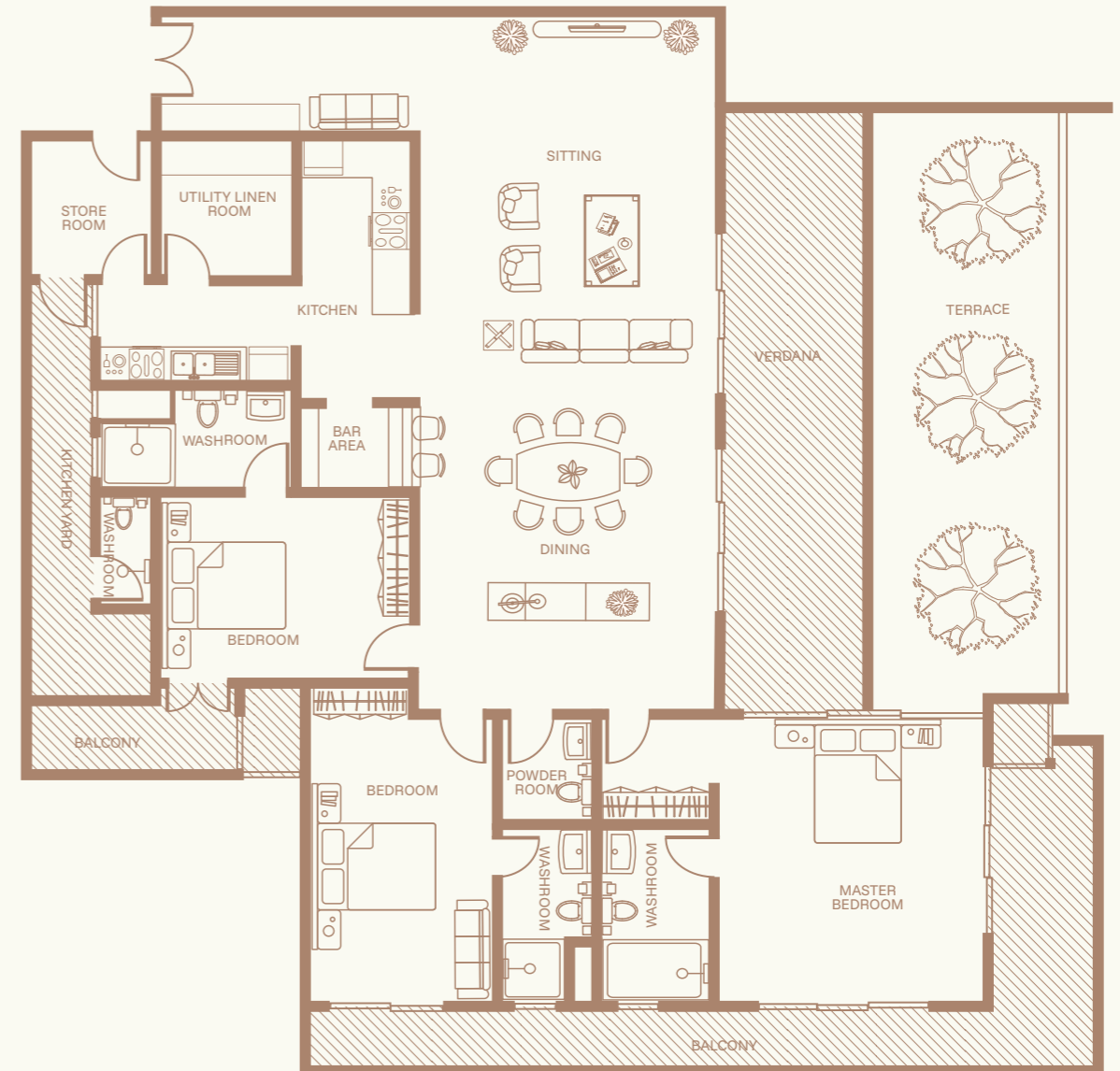
ZEPHYRA PENTHOUSE



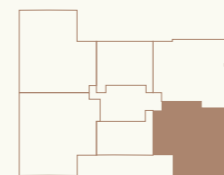
Total Area	2,863 sqft
Bedrooms	3
Bathrooms	3



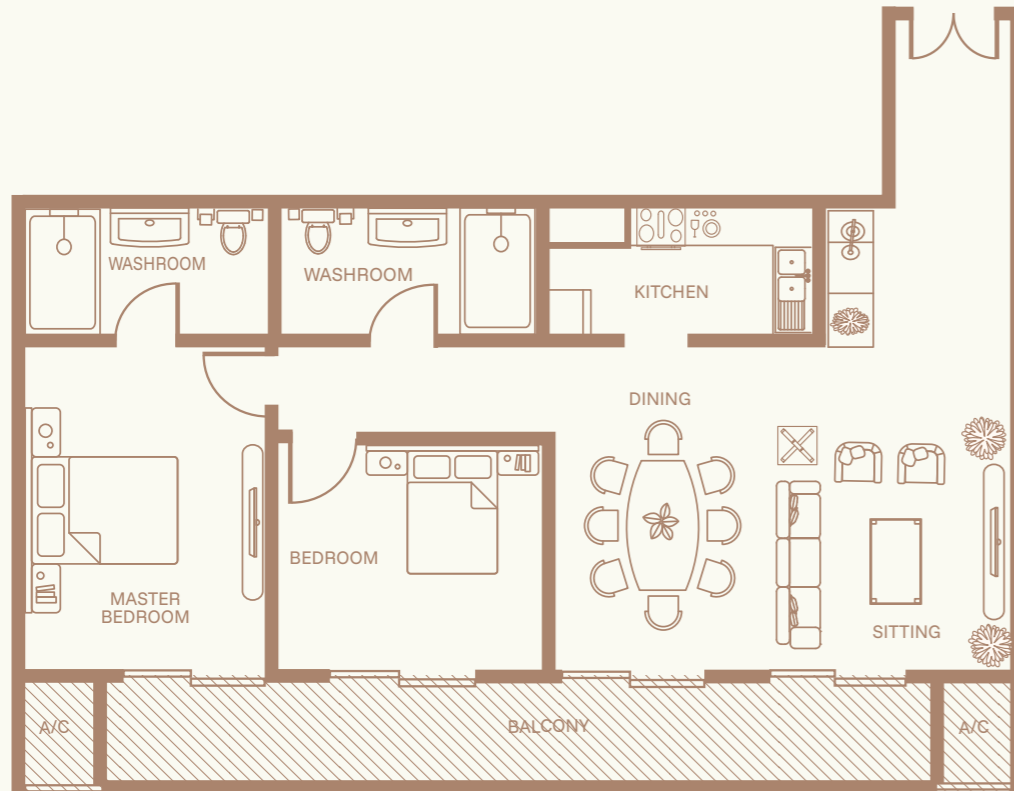
ALARA PENTHOUSE



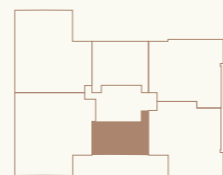
Total Area	2,958 sqft
Bedrooms	3
Bathrooms	3



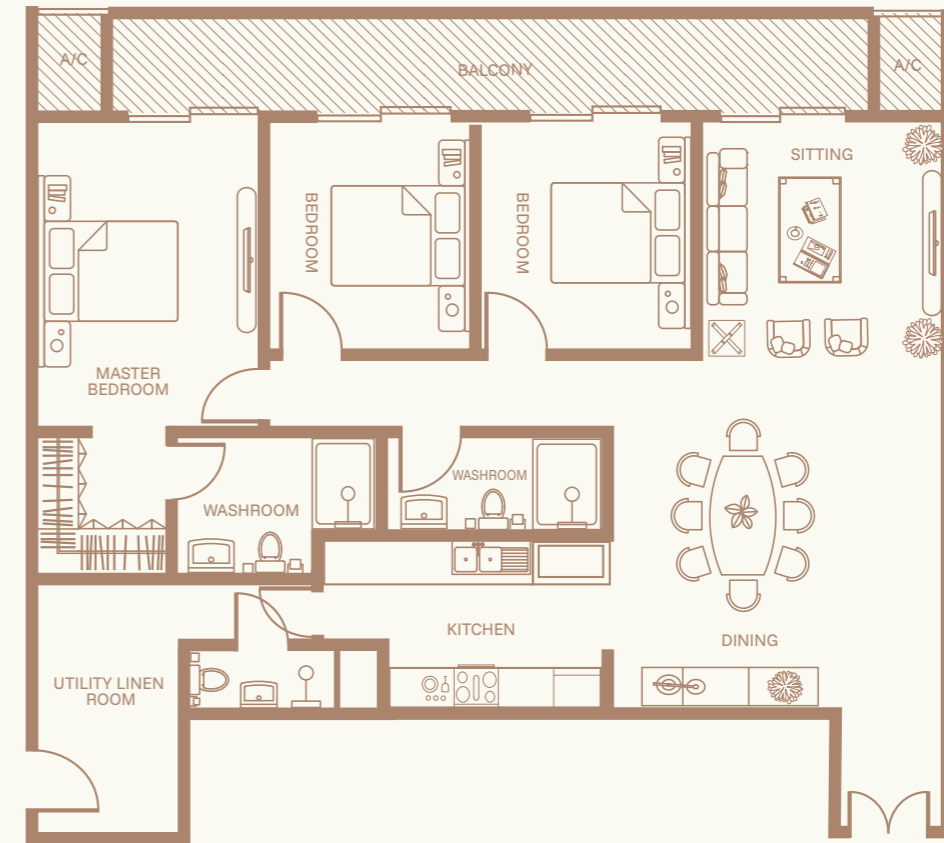
VELMONT PENTHOUSE



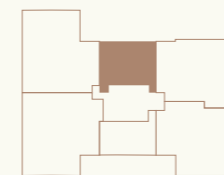
Total Area	1,205 sqft
Bedrooms	2
Bathrooms	2



MERIDON PENTHOUSE



Total Area	1,557 sqft
Bedrooms	2
Bathrooms	2





About JAT Living

Most developments begin with a calculation. How much can fit. How efficiently it can be sold.

That's where many stories start.

At JAT Living, ours begins elsewhere, with how a space will actually be lived in.

Because long after the plans are approved and the walls are built, what matters is something far less visible: how naturally a home fits into everyday life.

This thinking has shaped every project we undertake.

Over time, JAT Living has steadily developed a portfolio of residential projects across Sri Lanka, from thoughtfully planned apartment developments to housing schemes, each approached with the same focus on practicality, space, and long-term livability.

Underpinning this is the strength of a trusted group known for its emphasis on quality, materials, and craftsmanship — values that

carry through into every JAT Living development.

But beyond credentials and experience, what defines us is a simple belief: a home should not require you to adjust your life to fit it.

Our residences are not designed to simply occupy space, but to work with the way people live — with layouts that feel open, natural, and considered. Spaces that don't ask you to compromise, rearrange, or adapt. Spaces that feel right, without needing explanation.

This approach is backed by the strength and legacy of a group known for quality and craftsmanship, and carried forward through a new vision for modern living, one that prioritizes livability as much as it does design.

Because over time, the true measure of a home is not how it looks on a plan, but how it supports the life lived within it.

And that is what we build for.

Contact JAT Living for more information or to register your interest.

Address | No. 351 Pannipitiya Road, Thalawathugoda

Email | info@jatliving.com

Hotline | +94 117 200 800

All statements, information, representations, and depictions contained in these marketing materials (including but not limited to brochures, advertisements, digital media, and show units) are provided in good faith and are believed to be accurate at the time of publication. However, they are intended for general guidance only and shall not be construed as statements or representations of fact, nor shall they be relied upon as forming any part of any offer, contract, warranty, or representation.

All visual representations, including but not limited to images, photographs, illustrations, renderings, and graphical depictions, are artist's impressions and/or computer-generated images. While the development itself is real, all such depictions are indicative only. The actual design, layout, finishes, fittings, materials, colours, specifications, landscaping, and surrounding environment may differ from those shown.

All plans, layouts, specifications, dimensions, and areas provided are approximate and subject to change, modification, or substitution as may be required by the Developer, its consultants, or relevant regulatory authorities. The stated floor areas are indicative and subject to final survey, measurement, and confirmation upon completion.

No reliance should be placed on any statement, representation, or information contained in these marketing materials. Prospective purchasers are advised to conduct their own independent investigations, inspections, and due diligence prior to entering into any legally binding agreement.

The Sale and Purchase Agreement (SPA), together with its schedules and annexures, shall constitute the entire agreement between the Developer and the Purchaser. No statement, representation, warranty, or undertaking made in these marketing materials, or by the Developer and/or its agents (whether oral or written), shall have any contractual effect unless expressly incorporated into the SPA.

Whilst reasonable care has been taken in the preparation of these marketing materials, the Developer, its agents, consultants, and representatives expressly disclaim all liability for any loss, damage, or expense arising from any reliance placed on the information contained herein, whether arising from negligence or otherwise, to the fullest extent permitted by law.

